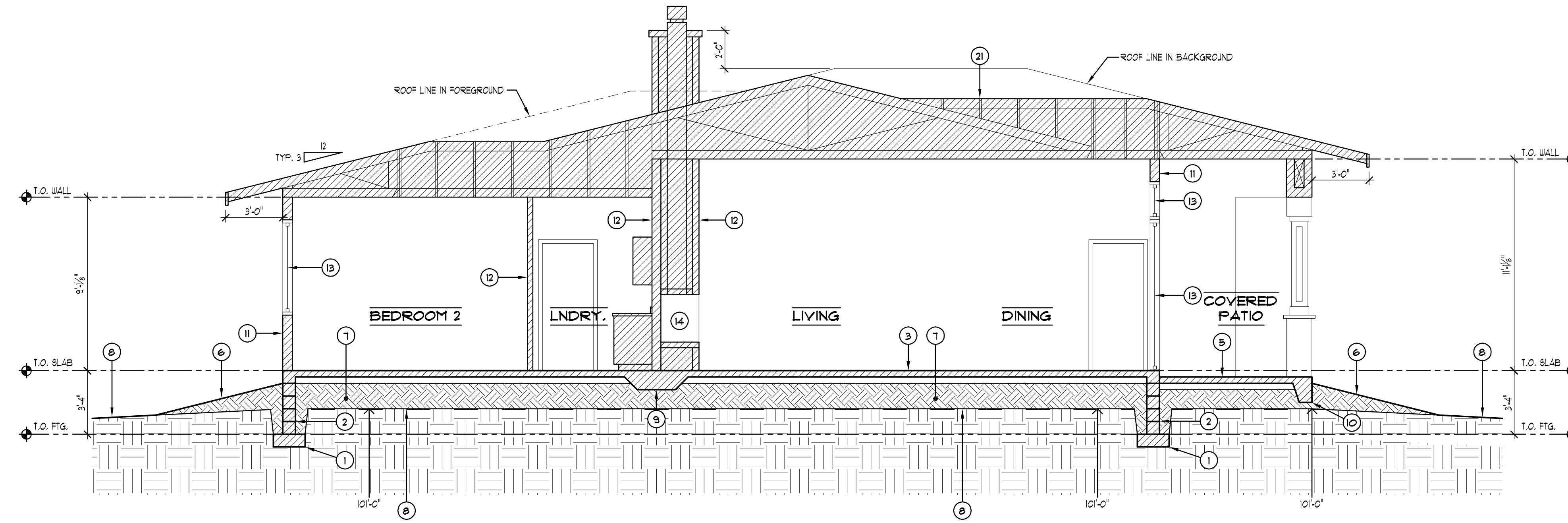
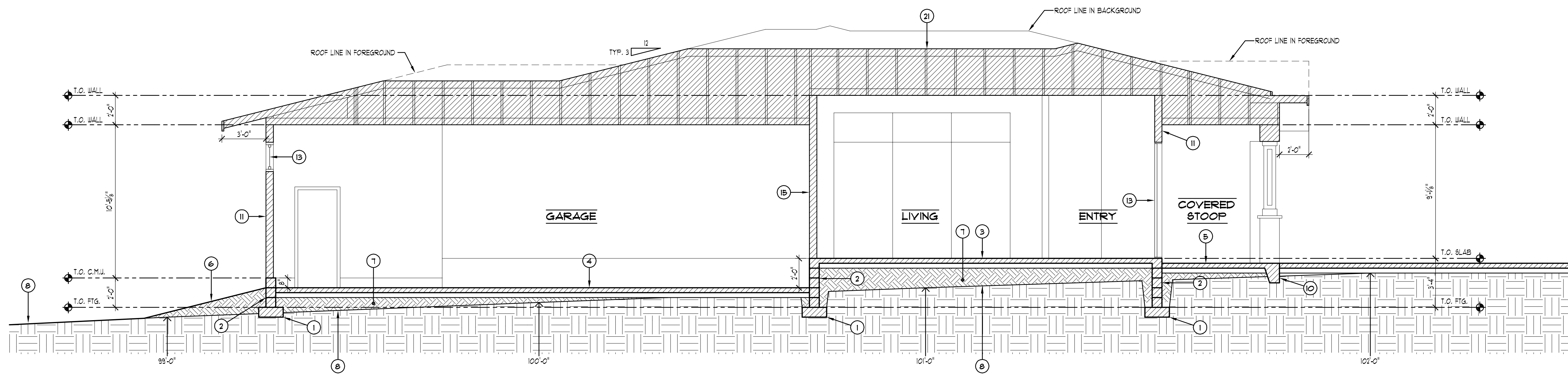


KEY NOTES:

- FOOTING CONSTRUCTION (SEE FOUNDATION PLAN):**
16" (W) x 8" (T) REINF. W/ (2) #4 BARS CONTINUOUS 4 VERT. #4 DOUELS @ 24" O.C. BEND INTO FOOTING 6" MIN. - ALTERNATE BEND DIRECTION
- FOUNDATION WALL CONSTRUCTION (SEE FOUNDATION PLAN):**
WATER PROOF MEMBRANE OR COATING OVER 8" x 8" x 16" C.M.U. GROUTED SOLID REINF. W/ -HORIZ. #4 BARS @ TOP & BOTTOM 4 VERT. #4 BARS @ 24" O.C.
- HOUSE FLOOR CONSTRUCTION (SEE FOUNDATION PLAN):**
4" CONCRETE SLAB REINF. W/ 6" x 6" - W/ 4 x W/ 4 W/ 4 W/ 4 OVER 6 MIL POLY. VAPOR BARRIER OVER 4" COMPACTED (95% MIN.) AGGREGATE BASE COURSE
- GARAGE FLOOR CONSTRUCTION (SEE FOUNDATION PLAN):**
4" CONCRETE SLAB REINF. W/ 6" x 6" - W/ 4 x W/ 4 W/ 4 W/ 4 OVER 4" COMPACTED (95% MIN.) AGGREGATE BASE COURSE - SLOPE SLAB 2" DOWN TOWARDS DOORS
- PATIO FLOOR CONSTRUCTION (SEE FOUNDATION PLAN):**
4" CONCRETE SLAB REINF. W/ 6" x 6" - W/ 4 x W/ 4 W/ 4 W/ 4 TURNED DOWN SLAB EDGE OVER 4" COMPACTED (95% MIN.) AGGREGATE BASE COURSE - SLOPE SLAB 1/8" PER FOOT AWAY FROM BUILDING
- FINISHED GRADE:**
FINISHED GRADE TO SLOPE AWAY FROM BUILDING 5% (18" PER 10'-0")
- ENGINEERED FILL:**
ENGINEERED FILL COMPACTED TO 95% MIN.
- NATURAL GRADE / UNDISTURBED SOIL**
- THICKEND SLAB FOOTING CONSTRUCTION (SEE FOUNDATION PLAN):**
24" (W) x 18" (T) REINF. W/ (3) #4 BARS CONTINUOUS
- TURNED DOWN SLAB DETAIL (SEE FOUNDATION PLAN):**
8" (W) x 16" (T) REINF. W/ (2) #4 BARS CONTINUOUS TOP & BOTTOM
- TYPICAL EXTERIOR WALL CONSTRUCTION (SEE FLOOR PLAN):**
EXTERIOR FINISH PER ELEVATIONS OVER "TYVEK" OR EQUAL BUILDING WRAP OVER 1/2" EXTERIOR WALL SHEATHING OVER 2 x 6 STUDS AT 16" O.C. W/ WALL INSULATION (R=9 MIN.) W/ 1/2" GYPSUM BOARD ON THE INTERIOR
- TYPICAL INTERIOR WALL CONSTRUCTION (SEE FLOOR PLAN):**
2 x 4 OR 2 x 6 STUDS (SEE FLOOR PLAN) AT 16" O.C. W/ 1/2" GYPSUM BOARD ON EITHER SIDE
- WINDOW / DOOR (SEE FLOOR PLAN):**
INSULATED WINDOW / DOOR UNIT (SEE FLOOR PLAN / WINDOW / DOOR TYPES)
- GAS FIREPLACE INSERT:**
GAS FIREPLACE INSERT TO BE INSTALLED PER MANUFACTURER SPECIFICATIONS & INSTRUCTIONS
- 1/2" FIRE RATED GYPSUM BOARD ON GARAGE SIDE OF ALL GARAGE / HOUSE WALLS**
- TYPICAL ROOF CONSTRUCTION (SEE ROOF PLAN):**
COMPOSITION SHINGLES (30 YEAR WARRANTY) OVER 30" ROOFING FELT OVER 1/2" CDX PLYWOOD ROOF SHEATHING W/ 1" CLIPS OVER PRE-ENGINEERED ROOF TRUSSES (LAYOUT & INSTALLATION PER TRUSS MANUFACTURER W/ SIMPSON -H2BA OR EQUAL CONNECTORS AT EACH TRUSS) W/ 5/8" GYPSUM BOARD CEILING & FIRE RATED GYPSUM BOARD AT GARAGE.



1 BUILDING SECTION
SCALE: 1/4" = 1'-0"



2 BUILDING SECTION
SCALE: 1/4" = 1'-0"